



Linley Boulden

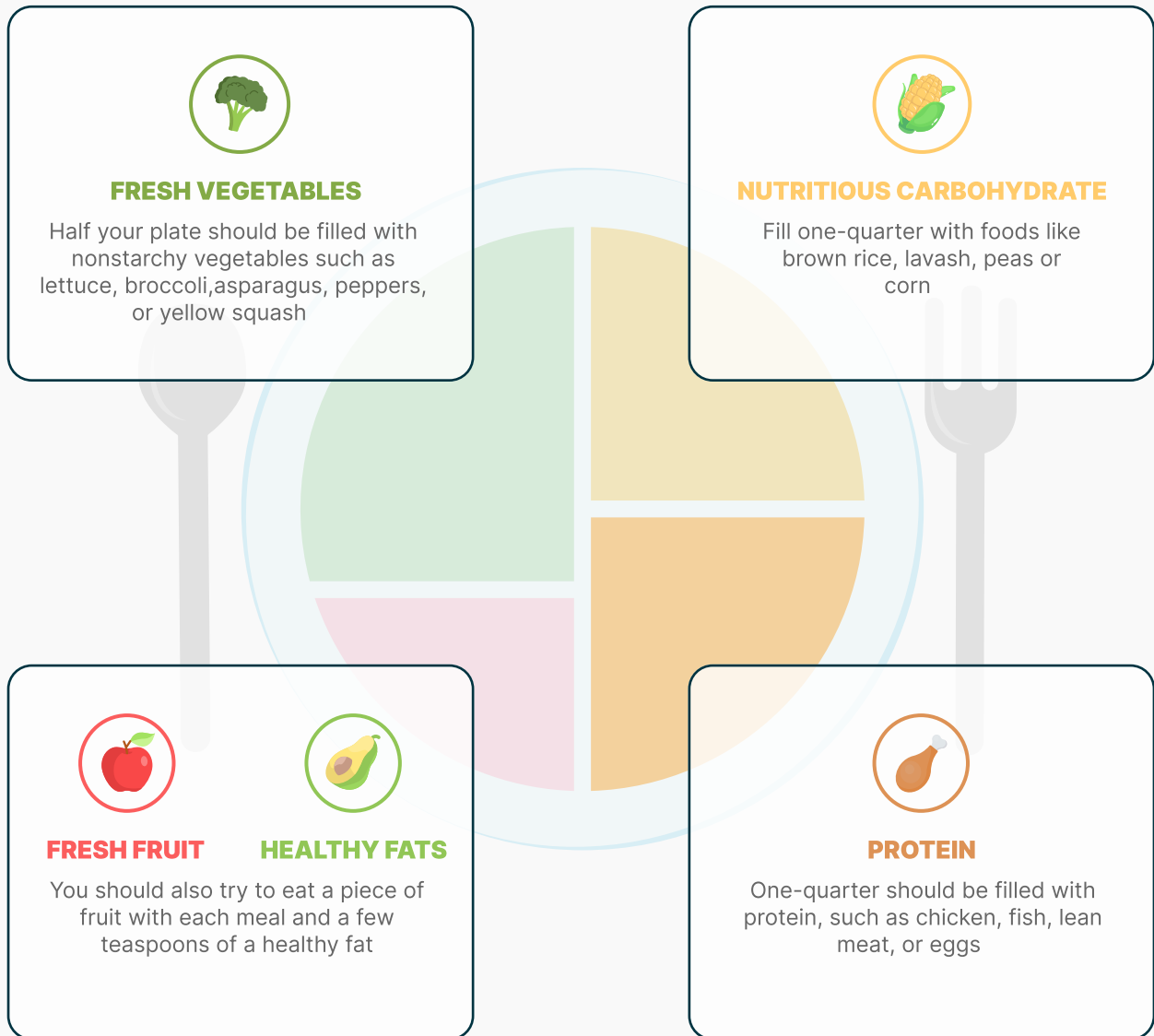
Accredited Practising Dietitian

DIABETES-FRIENDLY MEAL PLANNING

What you eat is essential in a type 2 diabetes diet, but how much you eat is just as important. The Plate Method is an easy way to help you portion out your meals—it shows you how much of each food group you should eat at each meal.

Download this card and keep it in your kitchen. Use it as a reference to help you eat a variety of the right foods and manage your portions based on a 9-inch dinner plate.

This is a recommendation. Talk to your doctor about what nutrition plan is right for you.



Drink water, tea, or coffee (with little or no sugar).

Limit milk/dairy (1-2 servings/day) and juice (1 small glass/day). Avoid sugary drinks.